

# Home Hardening, Defensible Space and Central Coast Land Stewardship for Wildfire

## *Local history:*

15000 years of Native cultural burning collides with colonization and fire suppression.

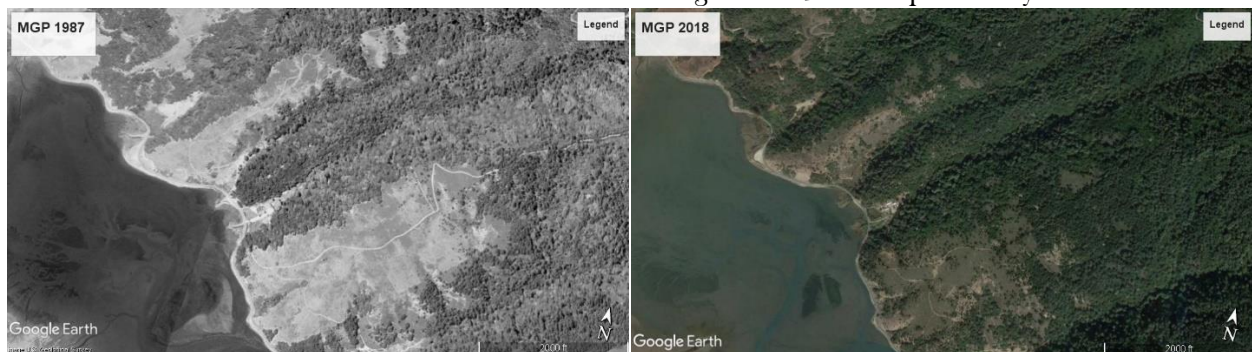
Here is a good article about contemporary [Native cultural burners](#) and [video](#)

[Forgotten Fires](#) by Omer Stewart is a great compilation of first-hand accounts of Native burning in CA and beyond.

## *Current situation:*

[Climate change and lack of stewardship](#) = drier vegetation and more of it

Below: Brush encroachment into coastal grasslands in the past 30+ years



## *Home hardening:*

-[Keep your home safe](#) in a ground fire or canopy fire or ember cast fire. Video of Jack Cohen, “godfather” of home hardening.

-[Home hardening talk](#) by Caerleon Safford, Sonoma’s Czar of Defensible space.

-[Home hardening issues](#): vents, roofs, siding, removing “kindling”, creating a none combustibile 3’ zone, decks and wood piles

## *Defensible space:*

-[The zones: 5’ to 30’ to 100’](#)

-[Shade fuel breaks](#) (aka. Forested fire breaks) and horizontal spacing

### ***Land stewardship tools:***

- [Prescribed burning](#)
- [Pile burning](#)
- [Targeted grazing](#)
- [Mechanical](#) (saws, chipping, mastication, pulling etc.)
- Chemicals: [Milestone](#) for French broom
- [Water](#): slowing it, sinking it and increasing it on your land

### ***Native species:***

- [The good](#) (less flammable): Live oaks, Redwoods, Old Douglas fir, Madrone, Buckeye, mowed Grasslands and gardens/ fruit trees
- The bad (very flammable): Knob cone pines, Monterey pines, Manzanita, Chamise, Bay laurel, Coyote bush and young Douglas fir

### ***Invasive species:***

- The ugly: French broom, Scotch broom, Pampas grass, Harding grass, Eucalyptus, Acacia, Italian thistle, Milk thistle, Yellow star thistle

### ***Pathogens:***

- [Sudden Oak Death](#): Bay tree removal/ Agri-fos as a prophylactic and “[fire mimicry](#)” for tree health. Apply Agri-fos in spring or fall, twice the first year and once a year after. (Agri-fos topical recipe: 1 gal spray mix= 62oz water + 3.2oz PentraBark + 62oz Agri-fos. Mix in that order)

- [Pine bark beetle](#), [Pitch canker](#)

### ***Solutions:***

Love, consistency and hard work!